

Part number:

006-10090

HYDROMA

HYDRAULICKÉ SYSTÉMY

**HIDROMA
SYSTEMS**

UKŁADY HYDRAULICZNE

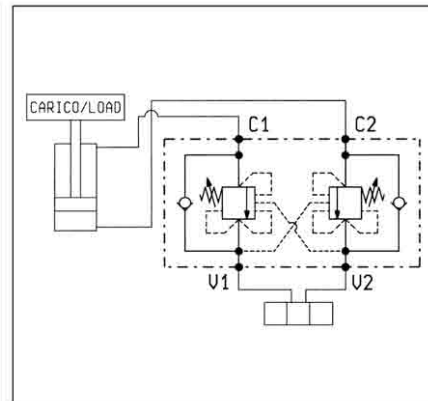
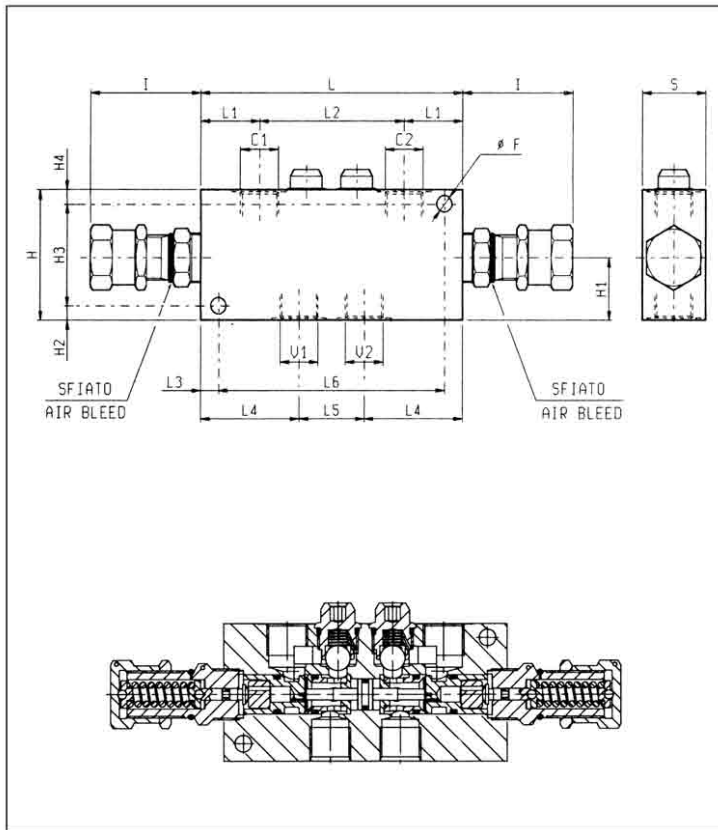
HYDROMA

ГИДРАВЛИЧЕСКИЕ СИСТЕМЫ

**BILANCIAMENTO, DOPPIO EFFETTO, VERSIONE "CC"
DUAL PILOT ASSISTED, "CC" TYPE OVERCENTRE**

VBSO-DE-CC

05.42.05- X - Y - Z



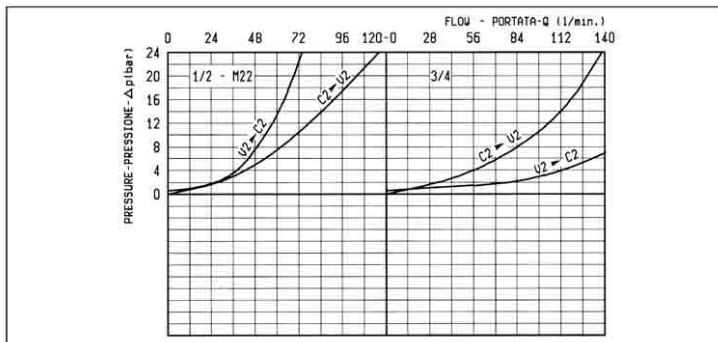
DATI TECNICI / TECHNICAL DATA

Pressione max. 350 bar
Max. pressure

Portata max. vedi diagramma
Flow see performance graph

Taratura della valvola: almeno 1.3 volte superiore alla pressione indotta dal carico
Pressure setting: at least 1.3 times the load induced pressure

40	155	50	62.5	10	107	34	175	65	10	70	10	38	90	10.5	3/4	2.15
35	125	36	54.5	10	86	29.5	145	65	8	54	8	33	70	8.5	M22	1.45
35	125	36	54.5	10	80	32.5	145	65	8	54	8	33	70	8.5	1/2	1.45
S	L6	L5	L4	L3	L2	L1	L	I	H4	H3	H2	H1	H	F	Y	Peso kg Weight kg



X	RAPPORTO DI PILOTAGGIO PILOT RATIO
02	8.2 : 1
10	3.2 : 1

Z	MOLLE / SPRINGS				
	Campo taratura min - max bar Adj. press. range bar	Incremento press. bar / giro vite Press. increase bar / turn	Taratura standard bar (Q = 5 l/min) Std. setting bar (made at = 5 l/min)	Cod. ordinazione Ordering code	Colore Colour
20	60-210	54	200	03.51.01.075	verde green
35	100-350	95	350	03.51.01.059	giallo yellow

Y	ATTACCHI / PORT SIZE	
	V1-V2-C1-C2	
03	G 1/2	
04	G 3/4	
89	M22x1.5	

Marzo 99